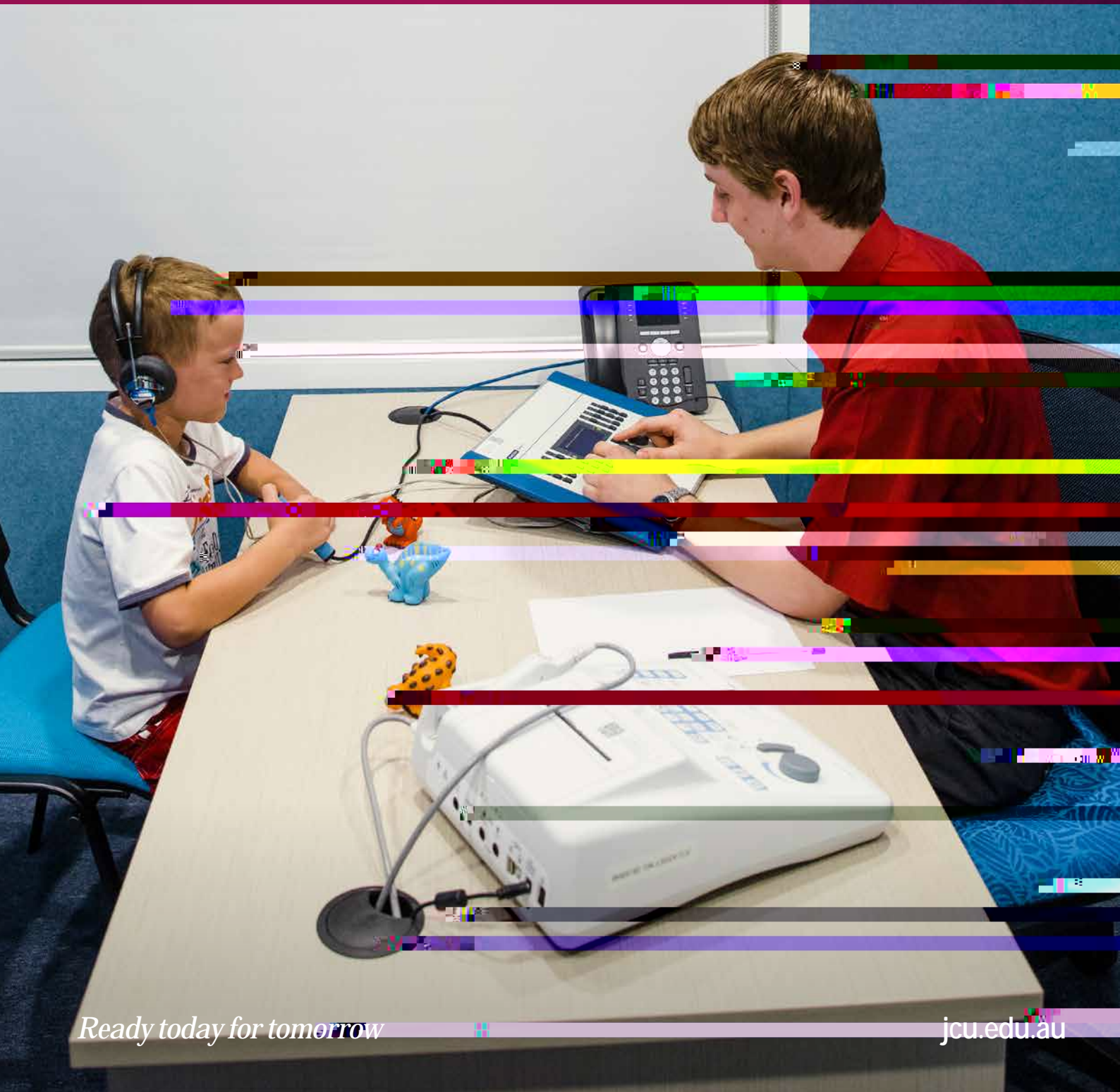


# Bachelor of Speech Pathology (Honours)



COOK  
UNIVERSITY  
AUSTRALIA



*Ready today for tomorrow*

[jcu.edu.au](http://jcu.edu.au)



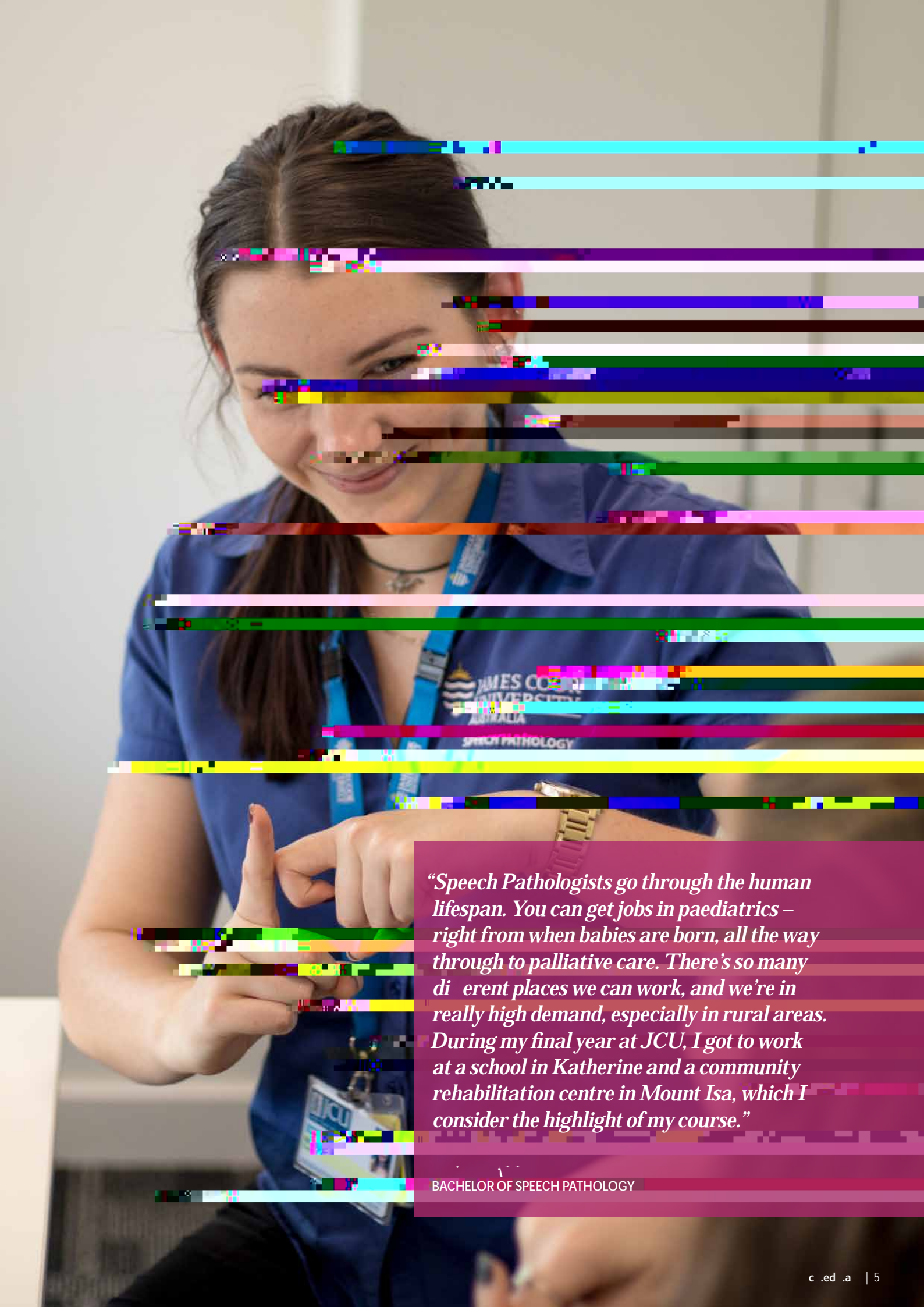


# Ready today for tomorrow

As an aspiring Speech Pathologist, you understand just how crucial communication is to human development and individual success. Your Bachelor of Speech Pathology (Honours) degree from JCU will qualify you to assess, diagnose, and manage significant speech and swallowing impediments.

Acquire a thorough understanding in areas such as anatomy, linguistics,





*“Speech Pathologists go through the human lifespan. You can get jobs in paediatrics – right from when babies are born, all the way through to palliative care. There’s so many different places we can work, and we’re in really high demand, especially in rural areas. During my final year at JCU, I got to work at a school in Katherine and a community rehabilitation centre in Mount Isa, which I consider the highlight of my course.”*

BACHELOR OF SPEECH PATHOLOGY

*“In the Speech Pathology program at JCU we have a unique focus on preparing graduates to work in rural and remote locations. Many of our graduates thoroughly enjoy the opportunities the course provides in experiencing and learning about the complexities and joys of rural and remote practice and many later chose to work in regional Australia after graduation. The course at JCU also has a strong emphasis in developing knowledge about the social determinants of health and how they impact communication and swallowing health. This leads to graduates that are more able to flexibly manage the challenges and complexities of working in a variety of different communities throughout their career.”*

## Career Opportunities

JCU Speech Pathology graduates have specialist skills and work with children and adults to promote speech and swallowing improvement.

Graduates pursue careers in various areas including education settings, hospitals, community health centres, nursing homes, child care, mental health services, disability services, and private practice.

This course is accredited by Speech Pathology Australia. Upon graduation, you will be eligible for Practising Membership of Speech Pathology Australia.





